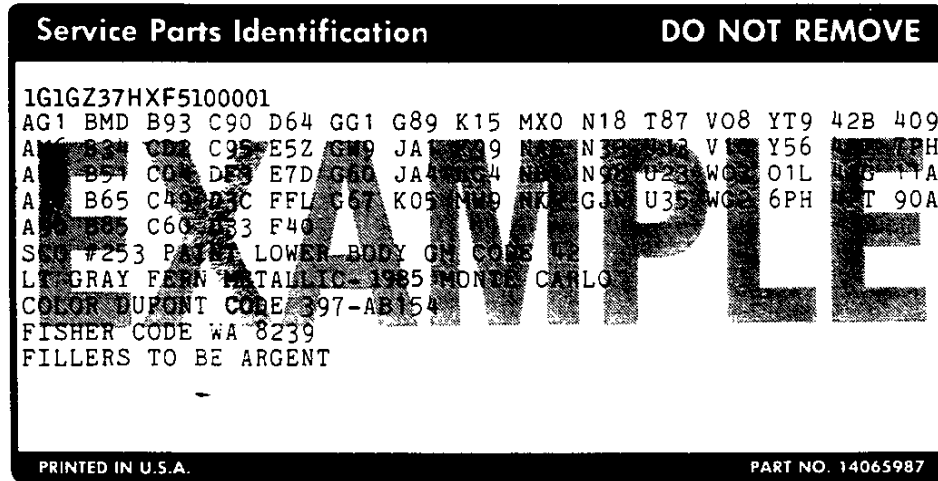


### SERVICE PARTS IDENTIFICATION LABEL

The Service Parts Identification Label provides identification of vehicle equipment to assist in servicing and determining replacement parts. Included on this label will be regular production options (RPO's) as well as standard and mandatory options. The label will be af-

fixed to the inside of each passenger car vehicle at the assembly plant.

For additional information on the Service Parts Identification Label, see a GM Parts Catalog.



### LABEL LOCATION

CORVETTE

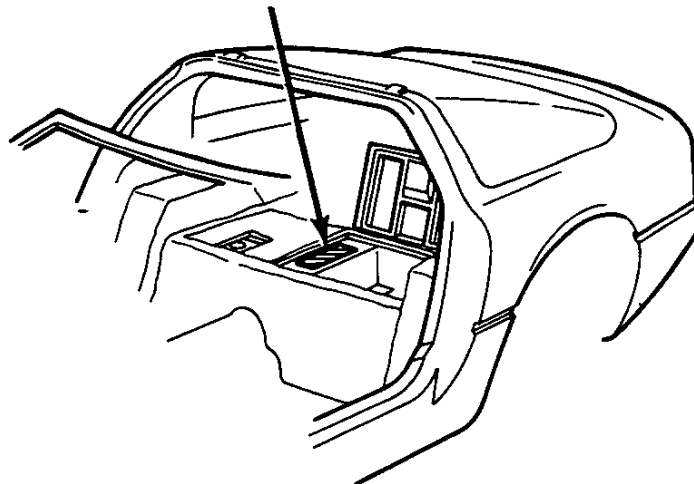


Figure OA-16 Service Parts Identification Label



# 1985 CORVETTE

Production: 39,729 coupes

## 1985 NUMBERS

**Vehicle:** 1G1YY0787F5100001 thru 1G1YY0787F5139729

• Ninth digit is a check code and varies.

**Suffix:** ZDF: 350ci, 230hp, at      ZJJ: 350ci, 230hp, at, oc  
          ZJB: 350ci, 230hp, mt      ZJK: 350ci, 230hp, mt, oc  
          ZJC: Export

**Block:** 14010207: All

**Head:** 462624: All

**Abbreviations:** at=automatic transmission, ci=cubic inch, hp=horsepower, mt=manual transmission, oc=engine oil cooler.

## 1985 FACTS

- The 1982 and 1984 Corvette engines had "Cross Fire Injection," but genuine fuel injection returned to the Corvette in 1985 for the first time in two decades. The 1985 tuned-port injection, built by Bosch, was standard equipment and featured a mass airflow sensor, aluminum-tube tuned intake runners, a mold-cast plenum, and an air cleaner mounted forward of the radiator support. This new L98 engine delivered a horsepower increase from 205hp to 230hp, a torque increase from 290 lb.-ft. to 330, and a real-world fuel economy increase of about 11%.
- The overdrive selection switch for 4-speed manual transmissions was moved during 1985 production from the console to the gear shift knob.
- Suspension rates were lowered in 1985, a result of harsh ride criticism. Springs for the base suspension were softer by 26% in front, 25% in the rear. Springs for RPO Z51 were 16% softer in front and 25% softer in the rear. To compensate for the spring change, larger-diameter stabilizer bars were included with Z51-equipped models.
- In its January 1985 "ten best" issue, *Car and Driver* magazine pronounced the Corvette to be America's fastest production car at an even 150mph top speed. Corvette also took top honors in top-gear acceleration and tied for best (with Porsche) in roadholding as measured by G-force skidpad adhesion.
- The bore of the brake master cylinder was increased in 1985, and the booster itself was plastic, the first such application in an American car. The new plastic booster was 30% lighter and less subject to corrosion.
- Manual transmission 1985s came with a new, heavy-duty 8.5-inch ring differential. Rear axle gearing for manuals was 3.07:1. Standard gearing for automatic transmissions was 2.73:1, but the 3.07:1 could be ordered as RPO G92.
- Wheel balance weights changed in 1985 from the outside-rim, clip-on style, to an inner-surface adhesive type. The change was mainly for aesthetics, but Chevrolet also believed a better balance resulted because of the adhesive weight's proximity to the wheel's depth center.
- A full length oil pan gasket reinforcement was added to the 1985 Corvette engine to improve gasket compression seal.
- The 1985 Corvette distributor was modified to prevent distributor spark ignition of exterior fuel vapors.
- Electronic instrumentation continued much as the previous year, but displays were revised and improved with cleaner graphics, less color on the speedometer and tachometer, and larger digits for the center-cluster liquid crystal displays.
- A map strap was added to the 1985's driver-side sun visor.
- Electronic air conditioning was announced as a late 1985 option, but introduction was delayed into the 1986 model year.

## 1985 OPTIONS

RPO #	DESCRIPTION	QTY	RETAIL \$
1YY07	Base Corvette Sport Coupe .....	39,729	\$24,403.00
AG9	Power Driver Seat .....	37,856	215.00
AQ9	Sport Seats, leather .....	—	1,025.00
AR9	Base Seats, leather .....	—	400.00
—	Sport Seats, cloth .....	5,661	625.00
AU3	Power Door Locks .....	38,294	170.00
CC3	Removable Transparent Roof Panel .....	28,143	595.00
D84	Two-Tone Paint .....	6,033	428.00
FG3	Delco-Bilstein Shock Absorbers .....	9,333	189.00
G92	Performance Axle Ratio .....	5,447	22.00
K34	Cruise Control .....	38,369	185.00
MM4	4-Speed Manual Transmission .....	9,576	0.00
NN5	California Emission Requirements .....	6,583	99.00
UL5	Radio Delete .....	172	-256.00
UN8	AM-FM Stereo, Citizens Band .....	16	215.00
UU8	Stereo System, Delco-Bose .....	35,998	895.00
V08	Heavy-Duty Cooling .....	17,539	225.00
Z51	Performance Handling Package .....	14,802	470.00
Z6A	Rear Window+Side Mirror Defoggers .....	37,720	160.00

• A 350ci, 230hp engine, 4-speed automatic transmission, removable body-color roof panel, and cloth seats were included in the base price.

• The optional sport seat, available only in cloth for 1984, became available in leather after the start of 1985 production. The total number of leather seats sold was 30,955, but the individual quantities of base leather seats and sport leather seats is not currently available.

• RPO Z51 included FG3 Delco-Bilstein shock absorbers, V08 heavy-duty cooling, extra radiator fan (pusher), heavy-duty front and rear springs, stabilizers and bushings, fast steering ratio and 16x9.5-inch wheels. FG3 and V08 were available separately with non-Z51 models.

• The RPO CC3 removable transparent roof panel was given stronger sun screening for 1985.

## 1985 COLORS

CODE	EXTERIOR	QTY	WHEELS	INTERIORS
13	Silver Metallic .....	1,752	Alloy	Gr-Mg
18	Medium Gray Metallic .....	2,519	Alloy	Gr-Mg
20	Light Blue Metallic .....	1,021	Alloy	Mb
23	Medium Blue Metallic .....	2,041	Alloy	Mb
40	White .....	4,455	Alloy	Ca-Gr-S-Mb-Mg
41	Black .....	7,603	Alloy	Ca-Gr-S-Mg
53	Gold Metallic .....	1,411	Alloy	S
63	Light Bronze Metallic .....	1,440	Alloy	Br
66	Dark Bronze Metallic .....	1,030	Alloy	Br
81	Bright Red .....	10,424	Alloy	Ca-Gr-S-Mg
13/18	Silver/Gray .....	2,170	Alloy	Gr-Mg
20/23	Light Blue/Medium Blue .....	1,470	Alloy	Mb
63/66	Light Bronze/Dark Bronze .....	2,393	Alloy	Br

• Suggested interiors shown. Other combinations were possible.

• Code 33 also used for Bright Red. Exterior colors for 1985 were the same as 1984, except Silver and Bright Red were brighter hues.

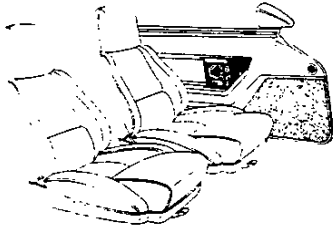
• Interior colors sold in 1985 were 11,927 graphite, 8,272 carmine, 5,195 medium gray, 5,176 bronze, 4,715 saddle, 4,443 medium blue.

• All wheels were alloy with similar exterior appearance. Standard wheels were 16x8.5-inch front and rear; the RPO Z51 package had 16x9.5-inch wheels front and rear.

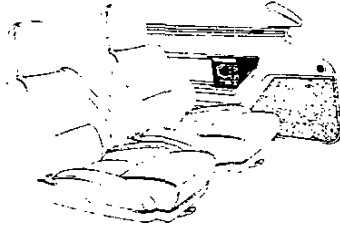
**Interior Codes:** 12C=Gr/C, 12V=Gr/Sc, 122=Gr/L, 15C=Mg/C, 15V=Mg/Sc, 152=Mg/L, 28C=Mb/C, 28V=Mb/Sc, 282=Mb/L, 62C=S/C, 62V=S/Sc, 622=S/L, 65C=Br/C, 65V=Br/Sc, 652=Br/L, 742=Ca/L.

**Abbreviations:** Ca=Carmine, Br=Bronze, C=Cloth, Gr=Graphite, L=Leather, Mb=Medium Blue, Mg=Medium Gray, S=Saddle, Sc=Sport Seat Cloth.

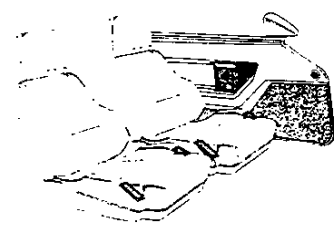
## SEAT & DOOR TRIM



Standard Cloth Reclining Bucket Seats with Wool-Pad Comfort Liner. Six-way driver's-side power available.



Optional Full-Leather Reclining Bucket Seats with Wool-Pad Comfort Liner. Six-way driver's-side power available.



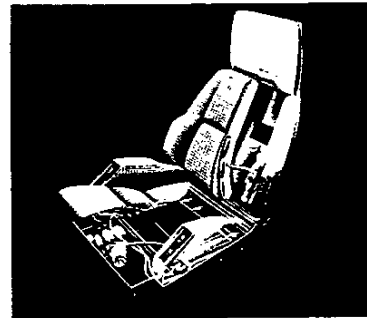
Optional Custom Adjustable Sport Seats with Wool-Pad Comfort Liner. Six-way driver's-side power available.

## COLOR & TRIM COMBINATIONS

MODEL	SEAT TYPE	INTERIOR COLORS					
		BLUE	BRONZE	GRAPHITE	GRAY	DARK RED	SADDLE
Corvette	Standard Cloth Bucket	X	X	X	X		X
	Optional Leather Bucket		X	X	X	X	X
	Optional Custom Cloth Adjustable Sport	X	X	X	X		X
EXTERIOR COLORS		CODE	INT. EXT. COMB.	INT. EXT. COMB.	INT. EXT. COMB.	INT. EXT. COMB.	INT. EXT. COMB.
Corvette Silver Metallic		13			X	X	X
Corvette Medium Gray Metallic		18			X	X	X
Corvette Light Blue Metallic		20	X		X		
Corvette Medium Blue Metallic		23	X		X		
Corvette White		40	X	X	X	X	X
Black		41		X	X	X	X
Corvette Gold Metallic		53		X			X
Corvette Light Bronze Metallic		63		X			
Corvette Dark Bronze Metallic		66		X			
Corvette Bright Red		81			X	X	X
CUSTOM TWO-TONE COLORS (RPO D84)							
Light Blue Metallic/ Medium Blue Metallic		20/23	X				
Light Bronze Metallic/ Dark Bronze Metallic		63/66		X			
Silver Metallic/ Medium Gray Metallic		13/18			X	X	X

### OPTIONAL CUSTOM ADJUSTABLE SPORT SEATS

Both driver and passenger seats feature full power adjustment for lumbar, backrest and backrest bolster adjustments to provide a high degree of versatility for practically every human form. Three separate lumbar supports for the lumbar region are controlled by internal bladder-type cells, powered by an air pump. These cells can be inflated or deflated to give the degree of pressure desired, especially on long drives. Lateral adjustment of the seat-back sides is controlled by a side-bolster power switch. This allows occupants to adjust the backrest sides to a comfortable degree of snugness. Back angle has a 12-degree adjustment range. Separate six-way power adjustment for the driver's side only is available; fore and aft adjustment is 6.5 inches, with up and down travel of approximately 1.5 inches.



See Dealer Order Guide for latest available information.

# CORVETTE

## ✓ COLOR AND TRIM SELECTION

PLEASE NOTE: The Exterior and Interior Combinations shown in the charts below and designated as recommended (R), represent the ideal combinations. Those that are shown as acceptable (A), are attractive, but less desirable than the recommended combinations.

Interior Trim Color		Blue	Bronze	Graphite	Gray	Dk Red	Saddle
MODEL	SEAT TYPE						
1YY07	Leather Bucket	ADD2	AEE2	ABB2	AQQ2	ARR2	AUU2
	Leather Adjustable Sport Bucket	ADD8	AEE8	ABB8	AQQ8	ARR8	AUU8
	Cloth Bucket	HDD2	HEE2	HBB2	HQQ2		HUU2
	Cloth Adjustable Sport Bucket	HDD8	HEE8	HBB8	HQQ8		HUU8

## WITH D84 CUSTOM TWO-TONE PAINT (Accent Color Must be Specified) (D60 NON-RECOMMENDED COLOR COMBINATION NOT PERMITTED)

Exterior Paint Color	Color Code		Accent Color and Ordering Code #	Blue	Bronze	Graphite	Gray	Dk Red	Saddle
	L	U							
Blue, Light (Met)	20	20	Med Blue (Met) 23M	R					
Bronze, Light (Met)	63	63	Dk Bronze (Met) 66M		R				
Silver, Corvette (Met)	13	13	Med Gray (Met) 18M			R	R	A	

# Must be Ordered

## WITHOUT D84 CUSTOM TWO-TONE PAINT

PLEASE NOTE: Orders for additional Interior Trim combinations may be submitted, provided the dealer orders (D60), as verification that the requested combination is definitely desired.

Black	41	41			A	R	R	R	R
Blue, Corvette Light (Mt)	20	20		R		A			
Blue, Corvette Med (Met)	23	23		R		A			
Bronze, Corvette Dark (Mt)	66	66			R				
Bronze, Corvette Lt (Mt)	63	63			R				
Gold, Corvette (Met)	53	53			A				R
Gray, Corvette Med (Met)	18	18				R	R	A	
Red, Corvette Bright	81	81				R	R	R	R
Silver, Corvette (Met)	13	13				R	R	A	
White, Corvette	40	40		R	A	R	R	R	R

L = Lower U = Upper

## POWER TEAMS (Refer to next page for option availability and application)

ENGINE OPTION CONDITION		AXLE RATIO	
		2.73	*3.07
<b>WITH NA5 STANDARD EMISSIONS</b>			
L98	MX0	<del>695</del>	<del>692</del>
	MM4	—	Std
<b>WITH NN5 CALIFORNIA EMISSIONS</b>			
L98	MX0	<del>695</del>	<del>692</del>
	MM4	—	Std

STD

STD

\* Standard with Z51 Performance Handling Package